

# 2012 National Conference

# Hands Up For The Future



Jupiters Hotel & Casino

Friday 14 to Sunday 16 September 2012

## Registration Brochure



# An Invitation

The Australian Childcare Alliance and Childcare Queensland extend a warm invitation to you to participate in the 2012 National Conference to be held from 14<sup>th</sup> – 16<sup>th</sup> September.

This year we have moved the conference date back in the calendar year so delegates can enjoy the “beautiful one day, perfect the next” spring weather in Queensland and hopefully be able to stay a few extra days to enjoy the Gold Coast and the many spectacular areas to be visited in the Hinterland.

We are excited that for the first time our conference, “Hands up for the Future” will be held at Jupiters Hotel and Casino on the Gold Coast. Jupiters is extremely central to shopping, dining, the beach and many other activities. Accommodation is in-house which we understand from last year's feedback, is a first preference for our delegates. However there is accommodation easily available within walking distance to Jupiters should you choose to stay offsite.

Our guest speakers have an amazing assemblage of knowledge of the Early Education and Care sector and we have chosen carefully to ensure that delegates will go away from this conference excited and with a kit of strategies and data to implement in their services to assist them to extend quality outcomes for children, support families and increase their business acumen.

A record number of trade displays and delegates are anticipated and our experienced conference team have dedicated their efforts to making it a spectacular event. Childcare Queensland sincerely thanks our loyal and new sponsors who make this event possible.

*Hands up for the Future* follows on from our 2011 Conference *Hands up for Play* wherein we dedicate workshops and the major plenary speakers to share with delegates their knowledge and experience in creating a sustainable environment that supports the National Quality Framework and will support our desire to provide high quality early education and care into the future.

Our champion golf organiser (not sure about champion player) Peter Jarrett from The Guild Group along with Julian Thomas from Sure-Play Pty Ltd have ensured those delegates who like to hit the white ball whilst getting their exercise will not be disappointed. Ambrose Golf Day tee-off is scheduled from 9.00 am on Friday 14<sup>th</sup> July at the Emerald Lakes Golf Club.

We are bringing from Washington DC Richard Cohen, our MC who specialises in Early Childhood Education and Care. We have spoken with Richard via SKYPE and he is enthusiastic and dynamic when he speaks of reflection of practices and other areas of early education and care that are very pertinent to our Early Years Learning Framework.

Hearing Anne Stonehouse, our plenary speaker on Saturday, talk to us on *Children here and now – what really matters* will be a must for all and a highlight of the conference. Anne has so much experience and her calm and informative approach to what is best practice will assist us greatly.

Minister Ellis, Minister for Employment Participation; Minister for Early Childhood and Child Care and Karen Curtis, ACECQA CEO, will speak to us about current policies and areas of interest to the sector. With the National Quality Framework, early learning and care and workforce issues being high on the political agenda we will be anxiously awaiting good news as we continue our *Hands up for the Future* journey.

Our workshop presenters are well experienced and each will deliver effective training from the 7 Quality Areas of the National Quality Standards. We hope to see many educators experience the full weekend of informative and much needed professional development. Presenters on business management, industrial relations and risk management will ensure that approved providers and managers have the opportunity to hear and discuss their responsibilities.

The conference commences on Friday night with our social function in Jupiters delightful pool area. This is a great opportunity to meet colleagues and network with delegates and sponsors.

Sunday's plenary speaker is Sue Elliott who will present to us *The Critical Decade: Thinking, Acting and Relating for Sustainability*. Sue is a long-term advocate of education for sustainability and in particular, natural outdoor play spaces.

Delegates have been asking for months, ‘what is the conference dinner theme?’ We know that one thing early childhood professionals enjoy is getting into costume and preferably being unrecognisable! This year's theme is “Hollywood Gala” which will allow you to come as Marilyn Monroe, Bugs Bunny, Al Capone (no guns please) – or whoever you wish to be. It will be a fun night with great food and dancing to the fantastic sounds of our conference band “Boogielicious”.

Our National two day conference provides valuable opportunities for delegates to interact with sponsor & exhibitor representatives, and is an important early childhood education and care forum for educators to network and reflect on current thinking and practice.

We welcome all delegates and we can assure you that our speakers and presenters will provide each of you, in whichever category you are involved in the early learning and care sector, with a valuable weekend of professional development.

Regards,



Gwynn Bridge

CEO - Childcare Queensland

President - Australian Childcare Alliance

## Australian Childcare Alliance

The Australian Childcare Alliance (ACA) is an extremely active body who are at the frontline in dealing with proposed changes to the sector by Governments. ACA works closely with Government and supports the Government's dedication in ensuring that the standards in Australian Early Learning Centres remain amongst the world's best.

Australian Childcare Alliance is the national association specifically for long day care services. ACA provides support, information and advice to keep members abreast of current research, information on government funding to families and the National Quality Framework. We support the sector and the early years workforce to assist them to provide best-quality childcare and early learning for children.

To assist with our advocacy, a Canberra lobbyist is engaged by the Association and as required, external experts are employed to provide accurate and detailed data for our submissions to governments.

ACA has become a prominent, well respected, active association and advocacy group for members, individual services, children, families and employees throughout Australia.

## Childcare Queensland

As a not-for-profit, member-funded organisation, Childcare Queensland is the peak long day care Association in Queensland and is Australia's largest state child care Association.

Childcare Queensland has a reputation as one of the most influential and respected childcare sector associations providing leadership and guidance on vital issues within our sector.

Childcare Queensland lobbies, advocates, promotes and liaises on behalf of our entire membership at a State level and through our Parent Body the Australian Childcare Alliance, at a Federal level. Childcare Queensland has a strong internal communications network with its members, suppliers and associate industries.

# Provisional Program

Please note that the Childcare Queensland conference program is subject to change without notice.  
Childcare Queensland takes no responsibility, or accepts any liability, for any opinions expressed by presenters at the Conference.

## Friday 14 September 2012

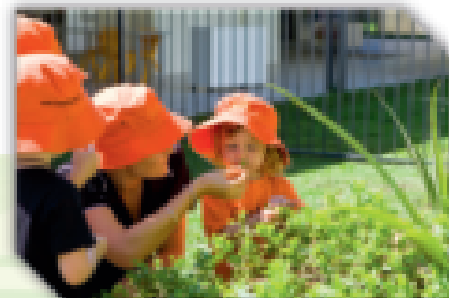
9:00am	Ambrose Golf Day Tee Off - Emerald Lakes Golf Club - Sponsored by The Guild Group and Sure Play
4:00 - 6:30pm	Conference Registration
7:00 - 9:00pm	Welcome Drinks - Sponsored by Kidsoft

## Saturday 15 September 2012

7:30am	Conference Registration
8:30am	Welcome & Overview of Proceedings
8:55am	Official Opening
9:15am	Keynote Presentation: <i>Children Here and Now - What Really Matters</i> - Anne Stonehouse - Sponsored by ANZ Bank
10:15 to 10:45am	Morning Tea
10:45am	The Guild Group - Gold Sponsor Presentation
11:00am	ACECQA - Karen Curtis CEO
11:45am	Richard Cohen (MC)
11:55am	Paul Baker - Meridian Lawyers: <i>IT and Social Media</i> - Sponsored by The Guild Group
12:45 to 1:45pm	Lunch
1:45 - 2:45pm	Concurrent Workshops 1) Leadership and Service Management: <i>A Business Perspective QA 7</i> - Jae Fraser General Manager Operations, G8 Education 2) Mentoring and Support: <i>The Role of the Educational Leader</i> - Richard Cohen 3) Journeys for sustainability: <i>Making Change Happen</i> - Sue Elliott
2:45 to 3:15pm	Afternoon Tea
3:15pm	Modern Teaching Aids - Silver Sponsor presentation
3:25pm	Motivational Speaker: <i>It's All About You</i> - Julie Cross
4:45pm	Official Close of Day 1
5:15pm	Close of Trade Booths
6:30pm	Pre Dinner Drinks - Pavilion Gallery
7:00pm	Hollywood Gala Conference Dinner - Pavilion Marquee - Sponsored by Hesta

## Sunday 16 September 2012

7:45am	Conference Registration
8:45am	Welcome
9:00am	Keynote Address: <i>The Critical Decade: Thinking, Acting and Relating for Sustainability QA 3&amp;4</i> - Sue Elliott
10:00 to 10:45am	Morning Tea
10:45am	Concurrent Workshops 1) Business/Industrial: <i>Common IR Misconceptions</i> - Gil & Jeaness Muir 2) Relationships with children QA 5 - Desley Jones 3) Collaborative partnerships with families and communities QA 6 - Dr Brenda Abbey and Pam Mclean - Sponsored by Central Info Hub
12:00 to 1:15pm	Lunch
1:15pm	The Hon Kate Ellis MP, Minister for Employment Participation and Minister for Early Childhood and Child Care
1:45pm	Concurrent Workshops 1) WHS/Risk Assessment: <i>Making Risk Management Part of Your Culture</i> - Lana Radley, Sponsored by The Guild Group 2) Child Protection QA 2 - Michael Pecic 3) Programming and Practices QA 1- Rebecca Rose Perkins, Rose3
3:00pm	Reflective Practices QA 1 - Richard Cohen Includes wine & cheese
4:15pm	Announcement of Raffle Prizes & Close of Conference



# Speakers

## Richard Cohen - Conference MC - Workshop: The Role of the Educational Leader

Richard Cohen, MA has proudly been an early childhood professional for over twenty five years, with the past fifteen years spent travelling the world as a motivational speaker/instructor, for communities of early childhood teachers, administrators, caregivers and parents. Currently, Richard is the Director of Communications, Partnerships and New Initiatives at the Council for Professional Recognition in Washington, D.C. Just a few of his previous achievements have been serving as Senior Director of Professional Development at the National Association of Child Care Resource & Referral Agencies, Vice President of Education of the second largest global child care corporation, Learning Care Group, and as Early Childhood Training Specialist for the California Institute on Human Services at Sonoma State University.



## The Hon Kate Ellis MP

The Honourable Kate Ellis MP is the Minister for Employment Participation and Early Childhood and Childcare. Minister Ellis was elected to the House of Representatives for the Division of Adelaide, SA at the 2004 federal election. After the 2007 Kevin Rudd appointed Minister Ellis Minister for Youth and Minister for Sport. This made her the youngest person ever to become an Australian government minister, a record until then held by former Prime Minister Paul Keating. On 6 June 2009, in a ministerial reshuffle Ellis became Minister for Early Childhood Education, Childcare and Youth. She remained as Minister for Sport. Minister Ellis was re-elected to the seat of Adelaide at the 2010 federal election and became the Minister for Employment Participation and Early Childhood and Childcare and the Minister for the Status of Women in the Gillard Government on 14 September 2010. Following a Ministerial reshuffle on 1 March 2012, Minister Ellis remained the Minister for Employment Participation and Early Childhood and Childcare.



## Anne Stonehouse - Keynote Presentation: Children Here and Now - What Really Matters

Anne Stonehouse AM lives in Melbourne and is a consultant, writer and speaker about young children and practice in early learning settings. She has published many books, articles and other resources for educators and parents. Her main professional interests are the nature of good quality curriculum for babies and toddlers and family-educator relationships in early learning settings. She was a member of the writing team in the Charles Sturt University based consortium that developed the national Early Years Learning Framework. She is currently engaged in a number of projects related to the national and Victorian Frameworks.



## Karen Curtis

The Chief Executive Officer of ACECQA, Karen Curtis has broad experience in both the public and private sectors. Ms Curtis worked for 22 years in the Commonwealth public sector holding senior roles including for six years as the Australian Privacy Commissioner and Chief Executive Officer of the Office of the Privacy Commissioner. She was also Executive Director of the Australian Made Campaign and for seven years had an industry policy and advocacy role including for small business and regulation for the Australian Chamber of Commerce and Industry. Ms Curtis has governance, change management, service delivery, regulatory, policy, representational and media advocacy skills with extensive experience liaising with Ministers and senior executives in a range of portfolios, industry groups, and with the community.



## Paul Baker- Keynote Presentation: IT and Social Media

Paul Baker is the Managing Principal of Meridian Lawyers and has been the legal advisor for Guild Insurance Limited for over 20 years. In that time he has forged a close working relationship with the child care industry and represented child care operators in a number of leading cases. Paul is uniquely placed to talk about legal issues attaching to child care and has previously spoken at a number of child care conferences and forums about such issues.



## Jae Fraser - Leadership and Service Management: A Business Perspective

Jae has over 13 years' experience in the Child Care and Education industry. Academic credentials include a Bachelor of Education, Advanced Diploma of Early Childhood Education and several business management qualifications spanning across the many spectrums of the child care and education industry. To compliment these achievements, Jae has worked in all sectors of the child care industry from child care at the hands on level, through to centre management and operations senior management positions. Jae specialises in monitoring and performance development of the financial and quality assurance of Child Care and Education Services. Jae is passionate about teaching and guiding Child Care directors & managers to manage a healthy business while ensuring the highest quality of care and education is being provided. Jae is responsible for the operational and financial management of over 150 child care and education services in Australia and Singapore, including training, team succession and development of operations for acquired centres.



## Sue Elliott - Journeys for sustainability: Making change happen and The Critical Decade: Thinking, Acting and Relating for Sustainability

(Dip KTC, B Sc Hons, M Sc) Sue is a Senior Lecturer in early childhood education at the Australian Catholic University, Melbourne Campus and has many years experience in diverse early childhood and tertiary settings. She is a long-term advocate of education for sustainability and in particular, natural outdoor playspaces. Sue is a recognised author of several books and has recently completed an evaluative study of Westgarth Kindergarten Bush Kinder. She is convener of the Australian Association for Environmental Education Early Childhood Special Interest Group and has completed doctoral studies investigating sustainable outdoor playspaces at the University of New England.



## Julie Cross - It's All About You

Inspirational Entertainment! Julie understands that there is much more to connecting and inspiring an audience than speaking at them and repeating and reciting tired clichés and quotes. For inspiration and motivation to have life beyond the conference some genuine and authentic connection is required! Julie is an expert in the power of connection and within the first few minutes of her being on stage you will feel her sparkling energy and experience her extra-ordinary ability to instantly connect with her audience.

Julie started her business 15 years ago and in an industry that is competitive and with a name with no fame attached to it she has earned a reputation as a 'must see' speaker and been recognised for her speaking achievements. Julie is a multi award-winning speaker a truly gifted 'one of a kind' presenter with an unforgettable, sparkling and thought-provoking message. You can expect to be taken on a lively, fun and spellbinding journey that will stir your emotions, make you laugh out loud and revive your spirit.



# Speakers cont.

## **Gil & Jeaness Muir - Common IR Misconceptions**

Employer Services Pty Ltd holds a long-standing relationship with Childcare Queensland and provides industrial relations advice and support to CQ members. In recent years the ES team of Gil Muir (Director), Chris Muir, John Redsell and Jeaness Muir have assisted thousands of employers to adjust to the 'Fair Work' system of industrial relations and in particular, the Modern Awards. ES currently provides telephone advice to Childcare Queensland members with respect to questions that may arise under the Children's Services Award 2010, the Educational Services (Teachers) Award 2010 and the National Employment Standards (NES). During Childcare Queensland's long association with ES, Gil Muir has conducted many training sessions for Childcare Queensland to assist members come to terms with their responsibilities in the changing IR environment.



## **Desley Jones - Relationships With Children**

Desley Jones is currently director of Ballymore Kindergarten and Preschool. She has over 25 years experience in early childhood education as teacher, director and education consultant. Desley has a Diploma of Teaching (Early Childhood), Bachelor of Education, and an Honours Degree in Psychology. In addition to teaching fulltime, Desley has collaborated with a psychologist to write a social skills program for children experiencing difficulties in social interactions, including children with ASD and Aspergers. They implement this program at a local family counselling clinic. Desley's particular area of interest focuses on children's sense of self and their ability to build positive relationships with others. She has presented conference workshops on this topic for The Gowrie, Early Childhood Teachers Association (ECTA) and Consultants at Play (CAP). Desley was a 2011 recipient of a NEITA ASG Inspirational Teaching State and Territory Award.



## **Dr Brenda Abbey - Collaborative Partnerships With Families and Communities (with Pam Mclean)**

Dr Brenda Abbey is a consultant, author, trainer, presenter and mentor in early childhood education and care. Her extensive experience and expertise has led to her working with services across Australia, federal and state governments, regional councils, and international organisations. Brenda has a particular interest in increasing the knowledge and skills of educators. Her presentations and workshops are always in high demand because they are informative, highly interactive, practical, and enjoyable. Brenda has special expertise in the EYLF and has co-developed DVDs, posters and other resources to help services in implementing the EYLF.



## **Pam Mclean - Collaborative Partnerships With Families and Communities (with Dr Brenda Abbey)**

Pam Maclean is the Principal of Child's Play Consultancy Services and partner in the popular EYLF made easy team. Pam has extensive practical experience working in childcare settings, designing unique and successful facilities, mentoring and training educators and producing resources relating to the Early Years Learning Framework. Pam has won industry related awards at a national level. An experienced presenter, Pam has toured across Australia and spoken on a range of early childhood education topics. She has a reputation as an entertaining speaker with an emphasis on supporting educators in practical aspects of education. Pam's has co-developed a range of inspirational resources to support services with the Early Years Learning Framework implementation.



## **Lana Radley - Making Risk Management Part of Your Culture**

Professional Risk and Development Executive, Guild Insurance.

Lana is an experienced risk management practitioner with expertise in enterprise wide risk management and implementing cultural change. Lana has worked in the risk management field for over 10 years, during which she consulted to the health, manufacturing and community service sectors. Across the course of her career, Lana has developed a range of risk management systems and frameworks for organisations and coached people at all levels of an organisation on how to implement risk management. Lana has specialised in facilitating the development of risk culture in organisations and has coached multiple management teams on risk leadership. Lana also held a senior role in the Department of Defence where she worked in the International Policy Division and advised Defence and Australian Government leaders on risk management in areas of national security and Defence relationship policy.

Lana holds a degree in Japanese and Tourism Management and is currently studying an MBA at Monash University.



## **Michael Pecic - Child Protection**

Michael has nearly 25 years' experience in child protection case management, investigation and education. He served with distinction as a Detective with the Queensland Police Service for 20 years investigating child abuse offences, being awarded the Assistant Commissioner's award for dedication to child protection. For 10 years he was a core member of various SCAN teams (Suspected Child and Neglect multi-agency team) case managing the most serious of child protection issues. Michael has also served as the Chief Inspector for the Royal Society for the Prevention of Cruelty to Animals Queensland for 4 years where he worked closely at an executive level with Government Departments in regard to legislation and community expectations. He has dedicated the last 10 years to education and awareness of child protection issues. He has formal qualifications in management, training, investigation practices and public safety. Michael is a Churchill Fellow and a member of the International Society for the Prevention of Child Abuse and Neglect.



## **Rebecca Rose Perkins - Programming and Practices**

Rebecca Rose Perkins (Dip Teach Early Childhood, Owner Rose3) is an Early Childhood Educator with over 23 years of experience in a wide variety of educational environments: Pre-school/Lower Primary, School Principal, Contact Director C&K Kindergarten, Group Leader and Director (Long Day Care), Literacy Resource Consultant and Professional Development Presenter; Adult Trainer (Corporate Sector), Educational Author. Rose3 (Education, Training, Consulting) was created after identifying that many educators across all sectors of Early Childhood Education needed support when utilising the E.Y.L.F. in programming and practice. The Rose3 mission is to support educators and children grow through play-based environments, child-focused learning experiences, resources linked to the Early Years Learning Framework, (and other key educational guidelines, such as the Queensland Kindergarten Guidelines), Key Learning areas, such as numeracy and literacy and the new National Quality Standards. Rose3 is focused on the needs of Child Care, Family Day Care, Kindergarten, Preschool, Pre-Prep and Prep Early Childhood Educators.



# Registration Options

## TWO DAY CONFERENCE PACKAGE - includes Welcome Drinks & Conference Gala Dinner

	Member*	Non-Member
CQ Member Super Discount* Booked before COB Friday 13 July 2012	\$450.00	N/A
Early Bird Full Two-day Conference Package Booked before COB Friday 27 July 2012	\$550.00	\$650.00
Full Two-day Conference Package Booked after 27 July 2012	\$650.00	\$750.00

\* To be eligible for this registration rate delegates must be current financial members of Childcare Queensland

## SINGLE DAY CONFERENCE PACKAGE

Day 1 Conference Package – Saturday 15 September 2012	\$250.00	\$350.00
Day 2 Conference Package – Sunday 16 September 2012	\$250.00	\$350.00
Staff Discount Day 2 Conference Package – Sunday 16 September 2012 <i>(available to delegates attending Sunday <b>only</b> and must be accompanied by a full two-day registration)</i>	\$125.00	\$200.00

### Full 2-Day Conference Package includes:

- 🍷 Day 1 and Day 2 conference sessions
- 🍷 Welcome Drinks ticket, Morning/afternoon tea and lunch on Day 1 and Day 2, Conference Dinner ticket, Conference Satchel, entry to the trade exhibition and Certificate of Attendance for each workshop attended

### Single Day Conference Package includes:

- 🍷 Conference sessions for the day of registration
- 🍷 Morning/afternoon tea and lunch, Conference Satchel, entry to the trade exhibition and Certificate of Attendance for each workshop attended

### Social Options:

- 🍷 Golf - \$59 per player
- 🍷 Additional Welcome Drinks Tickets - \$70 per ticket (one ticket included in two-day conference package)
- 🍷 Additional Conference Gala Dinner Tickets - \$140 per ticket (one ticket included in two-day conference package)

### Terms and Conditions:

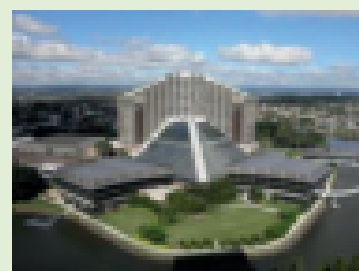
By registering for the Childcare Queensland Conference 2012, delegates agree to abide by the conditions set out on the conference registration form.

### Cancellation Policy:

All cancellations and changes to registrations need to be made in writing by email, fax or post. All cancellations received in writing before 29 August 2012 will be accepted, and registration fees refunded less a \$150 administration fee.

Regrettably, no refunds can be given after this date, however substitute delegates are most welcome with written notification. Additional social event tickets and golf registrations will be refunded in full if cancelled before 7 September 2012.

Regrettably no refunds can be given after this date, however substitute delegates are most welcome with written notification.



# For Your Information

## Climate

Temperatures on the Gold Coast during September range on average from 12°–23°C with 63% humidity.

## Dress

The dress standard for conference sessions and the Welcome Drinks (Friday evening) is Smart Casual. Conference Dinner theme is Hollywood Gala, so dress standard is up to your imagination!

## Mail and Messages

Childcare Queensland will not accept responsibility for personal mail, and messages cannot be delivered personally. Potential callers should contact Jupiters Hotel & Casino on (07) 5592 8100 and ask for a message to be left at the Childcare Queensland conference registration desk.

## Registration

Conference registration will be conducted at the Conference Registration Desk

Friday 14 September 2012

Saturday 15 September 2012

Sunday 16 September 2012

4:00 - 6:30pm

7:30 - 8:30am

7:45 - 8:45am

The conference will feature a number of industry-related trade exhibitors. The trade exhibition is a great opportunity to check out new products and services relating to the childcare industry with some great deals being offered to all delegates.

## The Venue

Jupiters Hotel & Casino, Broadbeach Island, Qld 4218 ph: 07 5592 8100 fax: 07 5592 8219 [www.jupitersgoldcoast.com.au](http://www.jupitersgoldcoast.com.au)

Breakfast is not included in Conference Registration packages, however a special discounted rate has been secured for breakfast at the buffet restaurant Food Fantasy. Breakfast is also available at Spinners Cafe or direct to rooms via the 24 hour Room Service facility. Breakfast costs are additional and payable direct to Jupiters Hotel.

Getting there - GPS map search: Casino Drive or Jupiters Casino Drive depending on supplier.

Brisbane airport approx 60 minutes, Gold Coast airport approx 30 minutes.

Local coach services operate from the Brisbane and Gold Coast Airports to the Hotel.

Nerang railway station is 9 kilometres from the Hotel with an Airtrain Connect service ([www.airtrain.com.au](http://www.airtrain.com.au)) for transfer directly to the Hotel and Brisbane Airports.

Parking - There are 5,000 under cover car parks on site. Self parking is complimentary. Valet parking is charged per 24 hours.

## Disclaimer

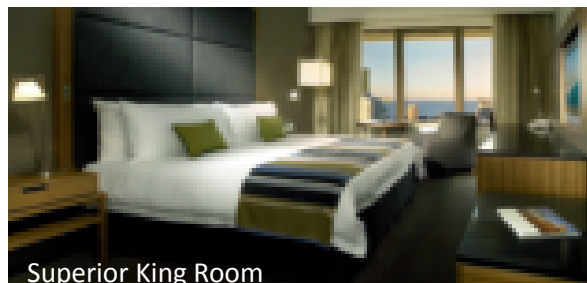
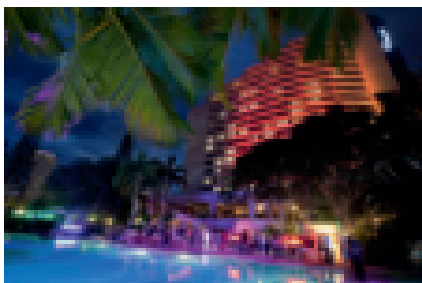
Childcare Queensland acts as the organiser only of these activities and does not accept responsibility for any act or omission on the part of the service providers. No liability is accepted for any inaccuracy, delay, damage, death, or personal injury.

# Travel Assistance

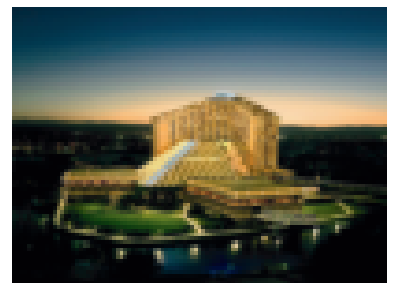
Childcare Queensland has applied for a grant from the Department of Education, Employment and Workplace Relations (DEEWR), Canberra to assist with funding travel costs for delegates attending the 2012 National Conference from regional and remote areas. **At time of printing, approval is pending. Please contact us to register your interest in funding assistance.**

# Accommodation

As part of our arrangements with Jupiters Hotel & Casino, an accommodation block has been reserved for delegates attending the Conference with Superior Rooms starting from \$179. To take advantage of the special rates, delegates must register via our website [www.childcareqld.org.au](http://www.childcareqld.org.au) or complete the attached Accommodation Request Form and return it to us.



Superior King Room





**Australian  
Childcare Alliance**  
Representing the future of Australian childcare



**Childcare  
Queensland**

## 2012 Major Sponsors

Listing current at time of printing



[www.childcareqld.org.au](http://www.childcareqld.org.au)

Post: PO Box 137 Springwood Qld 4127 Phone: 1300 365 325 Fax: 07 3808 2466 Email: [info@childcarequeensland.com.au](mailto:info@childcarequeensland.com.au)



## Childcare Queensland 2012 Annual Conference REGISTRATION FORM / TAX INVOICE

Please retain a copy as your receipt

You can register via our website [www.childcareqld.org.au](http://www.childcareqld.org.au) or by returning this form to:  
PO Box 137, SPRINGWOOD QLD 4127 Fax: (07) 3808 2466 Email: [conference@childcarequeensland.com.au](mailto:conference@childcarequeensland.com.au)

### A. PERSONAL DETAILS (please use one registration form per person and print clearly)

Title (Mr/Mrs/Ms/Miss) ..... First Name ..... Surname .....

Position / Job Title .....

Organisation .....

Postal Address .....

Suburb ..... State ..... Postcode .....

Telephone (Day) (.....)..... Mobile .....

Email .....

*(A confirmation email with details of your registration will be sent to this email address prior to the Conference)*

Dietary Requirements – Options Gluten Free, Lactose Intolerant, Vegetarian .....

### B. REGISTRATION OPTIONS - Please select your chosen registration option from the list below. All costs include GST.

#### i) Conference Delegate Registration

##### TWO DAY CONFERENCE PACKAGE

- |   | Member                            | Non-Member                        |
|---|-----------------------------------|-----------------------------------|
| <input type="checkbox"/> CQ Member Super Discount* booked by COB 13 July 2012<br><i>(*current financial members of Childcare Queensland only)</i> | <input type="checkbox"/> \$450.00 | N/A                               |
| <input type="checkbox"/> Early Bird Full Two-day Conference Package booked by COB 27 July 2012  | <input type="checkbox"/> \$550.00 | <input type="checkbox"/> \$650.00 |
| <input type="checkbox"/> Full Two-day Conference Package booked after COB 27 July 2012  | <input type="checkbox"/> \$650.00 | <input type="checkbox"/> \$750.00 |

##### SINGLE DAY CONFERENCE PACKAGE

- |  |                                   |                                   |
|--|-----------------------------------|-----------------------------------|
| <input type="checkbox"/> Day 1 Conference Package – Saturday 15 September 2012   | <input type="checkbox"/> \$250.00 | <input type="checkbox"/> \$350.00 |
| <input type="checkbox"/> Day 2 Conference Package – Sunday 16 September 2012   | <input type="checkbox"/> \$250.00 | <input type="checkbox"/> \$350.00 |
| <input type="checkbox"/> Staff Discount Day 2 Conference Package – Sunday 16 September 2012<br><i>(available to delegates attending Sunday <b>only</b> and must be accompanied by a full two-day registration)</i> | <input type="checkbox"/> \$125.00 | <input type="checkbox"/> \$200.00 |

#### ii) Conference Exhibitor Registration

##### TWO DAY EXHIBITOR PACKAGE

- Full Two-day Exhibitor Registration incl Gala Dinner & Welcome Drinks Two complimentary registrations included with exhibition package

##### ADDITIONAL EXHIBITOR REGISTRATION OPTIONS

- Single Day – Saturday 15 September 2012 (Does not include Welcome Drinks or Gala Dinner)  \$90.00
- Single Day – Sunday 16 September 2012 (Does not include Welcome Drinks or Gala Dinner)  \$90.00

**① TOTAL REGISTRATION COSTS \$ .....**

### C. SOCIAL OPTIONS – Welcome Drinks, Conference Dinner

The Welcome Drinks and Conference Dinner are included in the full two-day conference package and the exhibition package. Please confirm your attendance.

- |                        |                            |  |  |
|------------------------|----------------------------|--|--|
| Welcome Drinks         | Friday 14 September 2012   | <input type="checkbox"/> I will attend | <input type="checkbox"/> I will not be attending |
| Conference Gala Dinner | Saturday 15 September 2012 | <input type="checkbox"/> I will attend | <input type="checkbox"/> I will not be attending |

##### SINGLE DAY DELEGATES, EXHIBITORS & GUESTS

Single day delegates, exhibitors and guests who wish to attend these functions will need to purchase tickets as below:

- |                        |                            |   |            |
|------------------------|----------------------------|---|------------|
| Welcome Drinks         | Friday 14 September 2012   | \$70.00 per ticket x # Additional Tickets Required .....  | = \$ ..... |
| Conference Gala Dinner | Saturday 15 September 2012 | \$140.00 per ticket x # Additional Tickets Required ..... | = \$ ..... |

**② TOTAL ADDITIONAL SOCIAL COSTS \$ .....**

## D. AMBROSE GOLF DAY REGISTRATION – Hosted by The Guild Group & Sure Play

**When:** Friday 14 September commencing at 9:00am  
**Where:** Emerald Lakes Golf Club, Corner of Nerang Broadbeach Road, & Alabaster Drive, Carrara QLD 4211 Tel: (07) 5594 4400  
**Fee:** \$59.00 per player (Green Fees including cart)  
Hire equipment available at additional expense  
**Dress Code:** All players must be dressed in neat, casual attire and a collared shirt is compulsory. Denim, singlets and brief shorts are not permitted on the course. No metal spikes are permitted.

**Handicap:** .....

**③ TOTAL GOLF COSTS \$ .....**

## E. CONCURRENT WORKSHOP PREFERENCES

Delegates may attend the concurrent workshop of their choice and no pre-registration for this is required.

## F. PAYMENT DETAILS ABN: 65 768 804 095

Please transfer the total amounts payable from the sections above. All costs quoted include GST.

**① Registration Costs \$ .....**      **② Social Costs \$ .....**      **③ Golf Costs \$ .....**

**TOTAL AMOUNT PAYABLE \$ .....**

- CHEQUE** (made payable to Childcare Queensland)
- Credit Card** – payment can be made when registering via our website [www.childcareqld.org.au](http://www.childcareqld.org.au)

## G. REGISTRATION CANCELLATIONS AND REFUNDS

- All cancellations and changes to registrations need to be made in writing by email, fax or post.
- All cancellations received in writing before 29 August 2012 will be accepted, and registration fees refunded less a \$150 administration fee.
- Regrettably, no refunds can be given after this date, however substitute delegates are most welcome with written notification.

## H. PAYMENT TERMS

- All prices are in Australian dollars and include GST. Cheques must be in Australian currency, drawn on an Australian bank and free of all charges. Cheques should be made payable to Childcare Queensland. Payment by credit card (MasterCard/Visa only) is available on our website [www.childcareqld.org.au](http://www.childcareqld.org.au).
- Cheque payment must accompany your registration form. Registrations cannot be confirmed until payment is received.
- Payment must be received by 27 July 2012 to qualify for the early bird discount otherwise the standard registration fee will apply.

## I. PRIVACY STATEMENT

- Your name, organisation and email may be published on the delegate list which is provided to exhibitors and sponsors.
- Your name and contact information may be used by parties directly related to the event such as Childcare Queensland and approved stakeholders and sponsors.

Please indicate here if you wish for your name not to be included in this list.

- By providing your email address, you agree to receive emails in relation to this and future events of this type. You may opt out at any time by contacting [info@childcarequeensland.com.au](mailto:info@childcarequeensland.com.au)

## J. CONDITION OF REGISTRATION

By registering for the Childcare Queensland Conference 2012, delegates agree to abide by the conditions set out on this Registration Form.





**Childcare Queensland Annual Conference  
14 to 16 September 2012**

# Accommodation Booking Form

You can register for accommodation via our website [www.childcareqld.org.au](http://www.childcareqld.org.au) or by returning this form to:  
PO Box 137, SPRINGWOOD QLD 4127      Fax: (07) 3808 2466

Note: Due to encryption requirements, credit card details must be faxed or phoned through to our office if registering online

**Please read carefully and clearly complete all areas.**

Title (Mr/Mrs/Ms/Miss) \_\_\_\_\_ First Name \_\_\_\_\_ Surname \_\_\_\_\_

Organisation \_\_\_\_\_

Postal Address \_\_\_\_\_

Suburb \_\_\_\_\_ State \_\_\_\_\_ Postcode \_\_\_\_\_

Telephone (Day) (\_\_\_\_\_) \_\_\_\_\_ Mobile \_\_\_\_\_

Email \_\_\_\_\_

Arrival Date \_\_\_\_\_ Time \_\_\_\_\_\*      Departure Date \_\_\_\_\_ Time 11:00am      No of Nights \_\_\_\_\_

\* Check-in is not guaranteed until 2:00pm.

Number of Guests \_\_\_\_\_      Number of Rooms Required \_\_\_\_\_      Smoking/Non Smoking \_\_\_\_\_

**Accommodation Rate (per night)**

Superior Room      \$179.00      King       Twin       Triple occupancy add \$50     

Corner Balcony Room      \$229.00      King       Twin       Triple occupancy add \$50     

Executive Room ♦      \$279.00      King       Twin       Triple occupancy add \$100     

♦ Includes high level floors, Executive Lounge use, complimentary continental breakfast served in Executive Lounge, complimentary newspaper, valet parking.

Rollaway bed add \$50

\* Triple occupancy includes a rollaway bed

\* Requested room type and special requests cannot be guaranteed until check-in and are subject to availability

Credit card details are required for Reservation Guarantee purposes only. **Due to website encryption, these details must be faxed or phoned through to our office.**

I authorise my credit card to be used as payment for accommodation for the above mentioned name.

Credit card type      VISA       Mastercard       Diners       Amex

Credit card number \_\_\_\_\_      Expiry date \_\_\_\_\_      CCV/CVC \_\_\_\_\_

Name on card \_\_\_\_\_      Signature \_\_\_\_\_

**If the cardholder and guest are the same name then the card will automatically act as GUARANTEE ONLY and the accommodation balance is to be settled on check in.**

**Please tick one of the below boxes regarding what charges your credit card is to cover for the above guest:**

Guarantee Only       Accommodation Only       Incidentals Only       Accommodation & Incidentals

All payments will be processed by Jupiters Hotel, not Childcare Queensland. Jupiters charge a 2% service fee to all credit card transactions including the "credit" option on a debit card. Upon check-in you will be required to present either a credit card for authorisation or a \$200.00 **refundable** cash bond for any incidental charges incurred during your stay. Full payment is required direct to Jupiters Hotel upon check-out to settle your account.

**Cancellations**

Cancellations received between 14 August 2012 and 29 August will incur a 50% cancellation fee.

Cancellations (including "no shows") received after 29 August 2012 will incur a 100% cancellation fee.